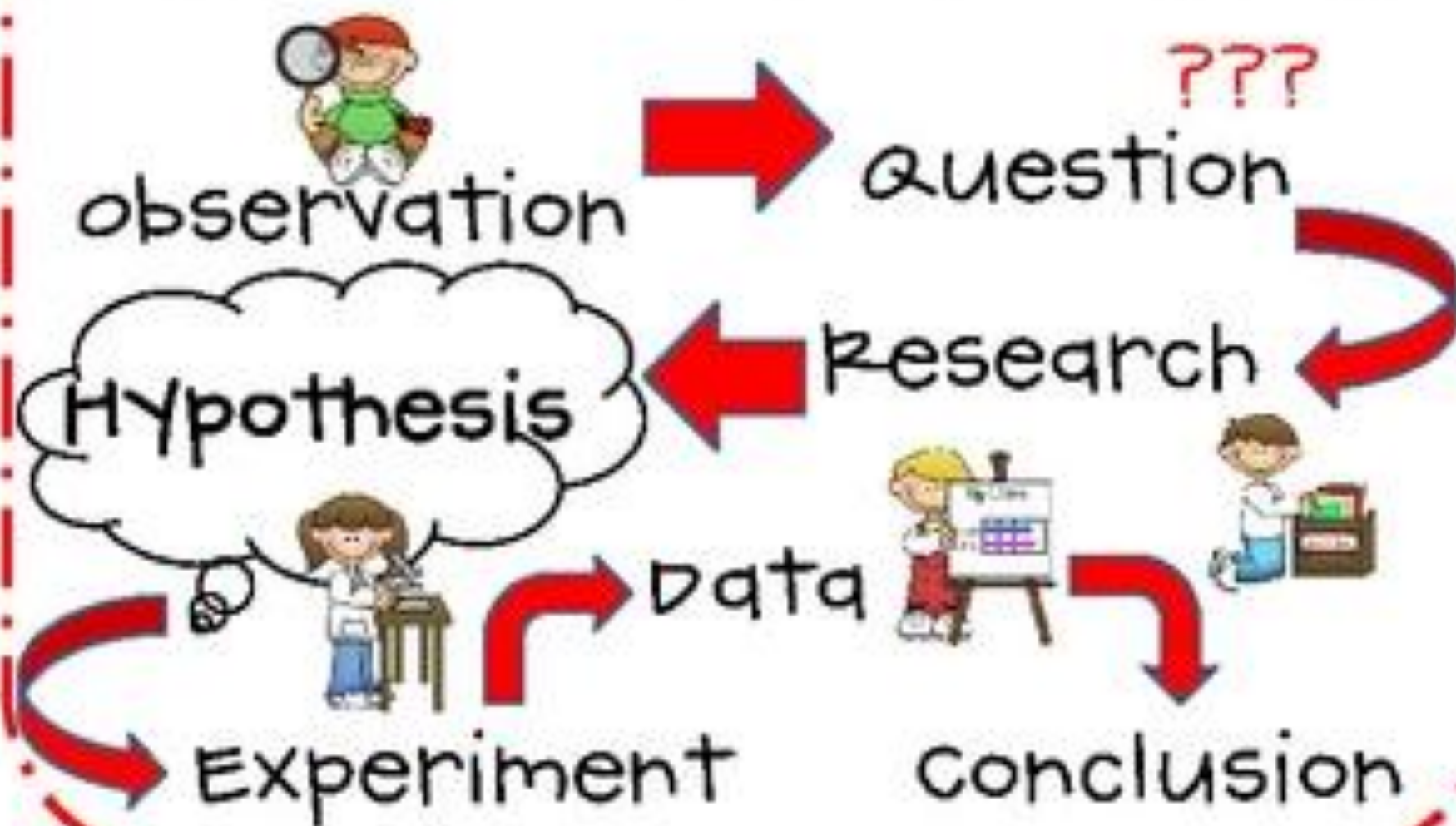
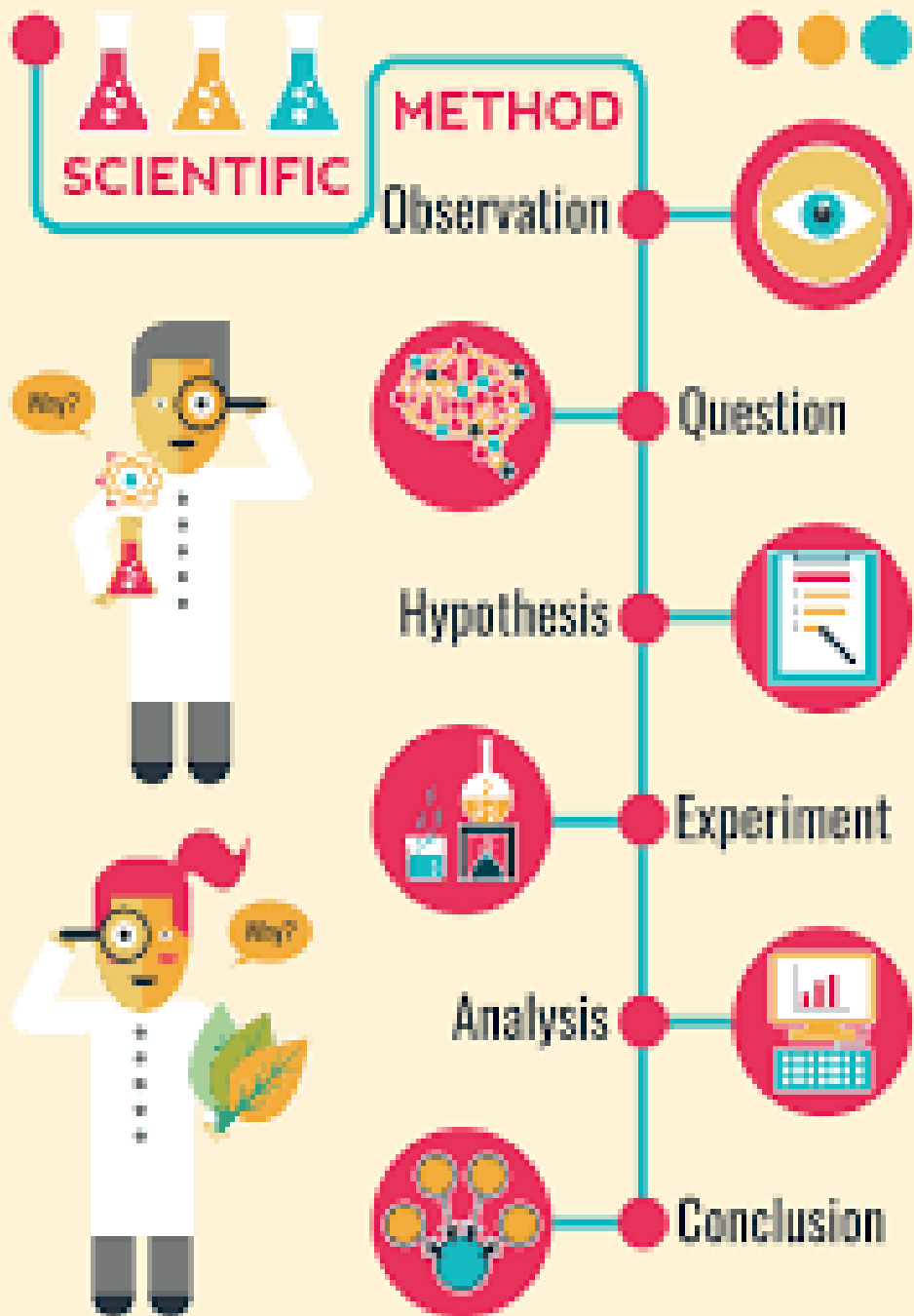


The Scientific Method





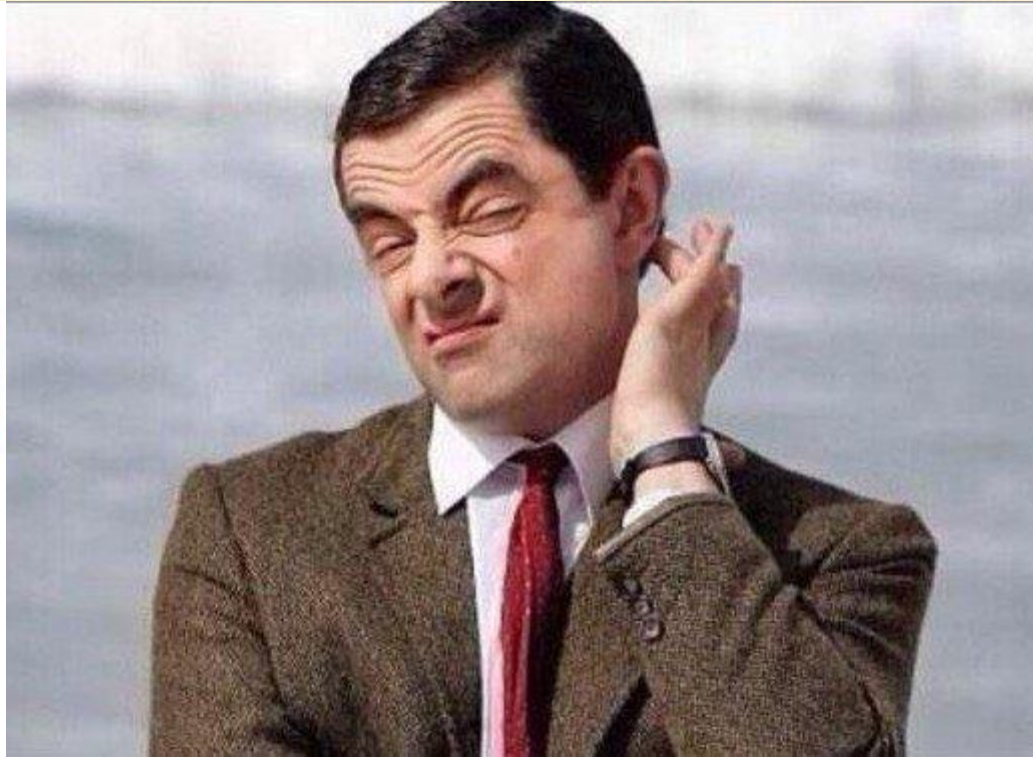
August Comte

- 1838 coined the term “sociology”
- **Positivism**
- Objective, fact-based research using the scientific method



Observation & Question

- Begin to form a research question based upon something you wonder about the social world.
- May start general but try to become specific about what you want to find out



Observation & Question

In education, it is commonly believed that parental involvement plays an important role in a child's future success. What affects may a parent's incarceration play on a parent's ability to be involved in their child's school?



Research & Hypothesis

- Begin to pay closer attention to what you can observe on the surface
- Research if other studies have been done. What did they conclude?
- Find where more research is needed and develop your experiment around this need.
- Develop your hypothesis based upon what you know from previous research



Research

“An impressive and impactful body of scholarship on the collateral consequences of parental incarceration for child wellbeing has amassed, suggesting overwhelmingly negative impacts for children across a range of social, economic, cognitive, behavioral, and health outcomes (eg. Haskins 2016; Travis, Western, and Redburn 2014’ Wakefield and Wildeman 2014).”

Hypothesis

“Present-day schools can be seen as a type of surveilling institution through their keeping of formal records, increased security, and direct connections to other public agencies. Thus, parents associated with, involved in, or in fear of engagement with the criminal justice system might disengage from schools, reducing or inhibiting the extent of their involvement in their child’s schooling.”



Experiment & Data Collection

- Quantitative (numerical statistics) vs. Qualitative (written, visual, audio)
- Primary (first hand) vs. Secondary (previous research, gov't data)
- Numerous methods are available



Research Methods

- **Social Surveys** – standardized questions given to large numbers of people
- **Experiments** – aims to establish cause and effect relationships
- **Interviews** – asking questions orally
- **Participant Observation** - researcher joins the particular group to study
- **Case Studies** – researching a single case or example
- **Longitudinal Studies** – studies a sample of people over a long period of time

Secondary data from Fragile Families and Child Wellbeing Study focusing on elementary school-aged children (longitudinal). Self-reports and teacher reports for depth and variation.

Analysis

- What does the data that you collected tell you?
- Be sure not to look for the answer you want (hypothesized) but the answer that is truly provided in the details!

Data from Fragile Families Study examined with multivariate regression analyses (statistics). Data categorized into seven parent involvement outcomes. See, you can use math in the real world!



Conclusion & Report

- Detail the entire scientific method you followed
- This should allow another research team to replicate your study
- Outline any problems or areas for further research

CONCLUSIONS

A.
B.
C.

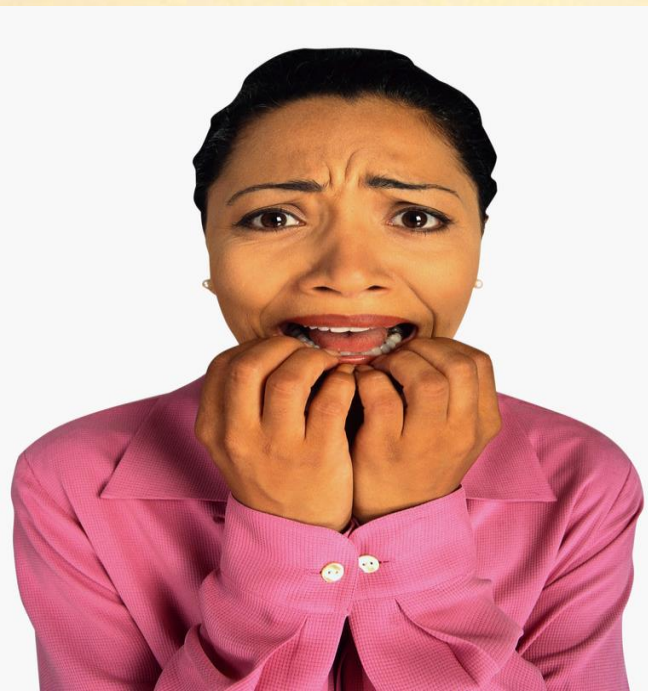
That's all Folks!

CONCLUSIONS

A.
B.
C.

Conclusions

- “School” means things to different people
- Those who have been “in the system” see it as an extension of government and control
- Social exclusion and teacher stigmatization
- Schools should work to create more welcoming and inclusive spaces





- Founded in 1905
- Currently 13,000+ members
 - College faculty, researchers, students, teachers
- Publish 14 [professional journals](#)/magazines
 - Sociological Theory
 - Sociological Methodology
 - Teaching Sociology
 - Sociology of Race and Ethnicity

VOLUME 81 • NUMBER 1 • FEBRUARY 2016

AMERICAN SOCIOLOGICAL REVIEW

2015 ASA PRESIDENTIAL ADDRESS

Sometimes the Social Becomes Personal: Gender, Class, and Sexualities
Paula England

MARRIAGE AND INTERSECTIONAL INEQUALITIES

The Accumulation of (Dis)Advantage:
The Intersection of Gender and Race in the Long-Term Wage Effect of Marriage
Siwei Cheng

ETHNORACIAL CATEGORIES AND SOCIAL IDENTITIES

The Role of Gender, Class, and Religion in Biracial Americans' Racial Labeling Decisions
Lauren D. Davenport

From Patrick to John F.:
Ethnic Names and Occupational Success in the Last Era of Mass Migration
Joshua R. Goldstein and Guy Stecklov

WORK, STRATIFICATION, AND HEALTH OUTCOMES

Childhood Disadvantage and Health Problems in Middle and Later Life:
Early Imprints on Physical Health?
Kenneth F. Ferraro, Markus H. Schafer, and Lindsay R. Wilkinson

Does a Flexibility/Support Organizational Initiative Improve High-Tech Employees'
Well-Being? Evidence from the Work, Family, and Health Network
*Phyllis Moen, Erin L. Kelly, Wen Fan, Shi-Rong Lee,
David Almeida, Ellen Ernst Kossek, and Orfeu M. Buxton*

CONFLICT, REBELLION, AND THE STATE

Grievances and the Genesis of Rebellion: Mutiny in the Royal Navy, 1740 to 1820
Michael Hechter, Steven Pfaff, and Patrick Underwood

Internal Wars, Taxation, and State Building
Diana Rodríguez-Franco

• A JOURNAL OF THE AMERICAN SOCIOLOGICAL ASSOCIATION •